

eTc BAY AREA EDUCATIONAL eTc
THEATER COMPANY



Disney's
BEAUTY AND THE BEAST

MARCH 28 - 30, 2024

BAYSIDE PERFORMING
ARTS CENTER

etc BAY AREA EDUCATIONAL etc
THEATER COMPANY

proudly presents our 47th Mainstage production

Disney
BEAUTY *AND THE* BEAST

Music By
Alan Menken

Lyrics By
Howard Ashman
& Tim Rice

Book By
Linda Woolverton

Originally Directed by
Robert Jess Roth

Originally Produced by
Disney Theatrical Productions

Incidental Music and New Vocal Arrangements by Michael Kosarin
Vocals Originally Arranged by David Friedman
Dance Music Arrangements by Glen Kelly
Orchestrations by Danny Troob

Disney's *Beauty and the Beast* is presented through special arrangement with
Music Theatre International (MTI).

All authorized performance materials are also supplied by MTI.
www.MTIShows.com

PLEASE NOTE

Food and beverages are not permitted in the theater.
Smoking is not permitted anywhere on the school grounds.

Videotaping and flash photography are prohibited.

This includes recording and photos on smart devices.

As a courtesy, please turn off cell phone ringers and paging devices.

Thank you for your cooperation.

A BRIEF HISTORY OF AND INFORMATION ABOUT ETC

Bay Area Educational Theater Company (eTc) was founded as a nonprofit organization in 1996. It fits a unique niche: community theater by, for and about families, however many different ways family is defined. eTc is privileged to have worked with an ever-growing number of children and their families, beginning with our first production in 1997. The children have had the opportunity to foster a love for theater while simultaneously developing a positive self-image. The families have had the opportunity to grow closer and strengthen the values of commitment, teamwork, and communication by sharing a common goal and lots of hard work. Many of our cast and crew members are making their theatrical debut in this production. The cast has been receiving instruction in acting, dance, and music, while a family member has been working hard on the production end of the show. All have had the opportunity to learn from professionals and seasoned amateurs.

eTc is proud to bring you *Beauty and the Beast*, our 47th Mainstage production and our 125th production overall! We hope you enjoy the show, and we look forward to seeing you either on stage or in the audience for future shows!

ETC MISSION STATEMENT

Bay Area eTc is an educational, family-oriented, nonprofit organization dedicated to fostering self-esteem, individuality, and teamwork while creating quality theatrical productions. eTc's method provides comprehensive theater training in a fun, safe and nurturing environment while exposing participants and audiences to theater arts. eTc welcomes diversity and contributes to the community by reinforcing the values of responsibility, commitment, integrity, and respect.

DIRECTOR'S NOTES

Bonjour! Welcome to our enchanted production! Traditionally this section is used for the director to write about the show, their experience and find deeper meaning in the story to share with you, our guests. However, this show is about change. Therefore, I want to change tradition and instead use this section to express my gratitude toward everyone involved in creating this beautiful beast of a show.

First and foremost, I want to thank this incredible cast. The positive energy radiating from this cast is unmatched. It takes a truly special group to put together a show of this caliber with only 20 total rehearsals. Thank you for your hard work, positive attitudes and flexibility. You should be so proud of your performances. I know I am.

Second, I'd like to thank our outstanding crew and parent volunteers for everything behind the scenes. Everything you see on stage was designed, built and created by volunteers. Without you, we would have a naked stage and naked actors, and this isn't that kind of show. I don't have room to list everyone here, so please be sure to read forward in this program to give credit where credit is due. A special shout out to Theresa, Jeanne, Kim, my parents (Dan and Kristi), Bruce, Miles and Ron.

Next, I'd like to thank Carlmont High School, Palo Alto Players and Hillbarn Theater for generously allowing us to borrow some of your sets, props and wigs. They made such a huge difference and completely elevated the production value of our show. Yay for theaters supporting theaters! Please be sure to return the favor by attending their upcoming performances! If you look closely, you may even catch this director on at least one of those stages ;)

To my superhuman, powerhouse, girl power team! Emily, Heather Anne and Ria, you bring support, wisdom, love and strength to this entire cast and crew. Without you, I'd go insane. Thank you.

And lastly, thank you to YOU, our patrons. Thank you for being here and continuing to support the arts. We love and appreciate you. Please continue to help keep theater and arts alive. This planet needs it. Without arts, we will all become things. Your patronage allows us to be human. Thank you.

- Sammi Kenbrandt

STAFF

Italics - Member of eTc Honor Role

ARTISTIC STAFF

Director *Sammi Kenbrandt*
Musical Director Heather Anne Tinling
Choreographer *Emily Simpson*
Lighting and Sound Designer Ron Ho
Projection Designer Ron Ho
Costume Designer Theresa Budig
Scenic Designer Jeanne Hoffman

PRODUCTION STAFF

Stage Manager *Ria Lodick*
Production Coordinator Kim McIntire
Production Assistant *Miles Grewell*
Sound Operator *Miles Grewell*
Technical Director Ron Ho
Box Office Patty Grewell
Volunteer Coordinator Michelle Oberes-Padre
Graphic Designer Jeanne Hoffman

WE CARE FOR YOUR SAFETY

The exit indicated by the illuminated sign nearest your seat is the shortest route to the street. Please note these exits.

In an emergency, WALK, do not run, to the nearest exit.

SCENES AND MUSICAL NUMBERS

ACT ONE

Overture	
Prologue	Prince, Enchantress, Narrator
Belle	Belle, Baker, Bookseller, LeFou, Gaston, Les Filles La Villes, Ensemble
Wolf Chase 1	Maurice, Wolves
Me	Gaston, Belle
Belle (Reprise)	Belle
Home	Belle
Home (Tag)	Mrs. Potts, Madame de la Grande Bouche, Belle
Gaston	Gaston, LeFou, Les Filles La Villes Village Ensemble
Gaston (Reprise)	Gaston, LeFou
How Long Must This Go On?	Beast
Be Our Guest	Lumiere, Mrs. Potts, Chip, Babette Cogsworth, Madame de la Grande Bouche Belle, Castle Ensemble
If I Can't Love Her	Beast

ACT TWO

Entr'acte	
Wolf Chase 2	Belle, Beast, Wolves
Something There	Belle, Beast, Lumiere Cogsworth, Mrs. Potts, Chip
Human Again	Lumiere, Cogsworth, Mrs. Potts, Chip Babette, Madame de la Grande Bouche, Castle Ensemble
Maison des Lunes	Gaston, LeFou, Madame Da'Arque
Beauty and the Beast	Mrs. Potts, Enchantress, Belle, Beast
If I Can't Love Her (Reprise)	Beast
A Change in Me	Belle
The Mob Song	Gaston, LeFou, Da'Arque Les Filles La Villes, Village Ensemble
Home (Reprise)	Belle, Beast
Transformation	Enchantress, Belle, Prince
Finale Ultimo	Company

THERE WILL BE ONE 15 MINUTE INTERMISSION

CAST LIST

(IN ORDER OF APPEARANCE)

Italics - Member of eTc Honor Role

ENCHANTRESS	Lorelai Shub*
BEAST/PRINCE	Doug Greer
BELLE	Lindsay Schulz
BAKER	Malwina Osowiecka
BOOK SELLER	Lola Rancatore
LEFOU	<i>Bekah Garlikov</i>
GASTON	Derick Punzalan
LES FILLES LA VILLES	Ashley Hollandsworth, Mia Judkins
.....	Maya Rayes, Riley Savage
MAURICE	Mark Goldberger
WOLVES	Evelyn Chen, Ria Cheng
.....	Grace Hollandsworth, Lola Rancatore
.....	Lorelai Shub*, <i>Caleigh Weinshel</i>
LUMIERE	Talia Loeb
COGSWORTH	Sammi Hollandsworth
BABETTE	Moorea Smith
MRS POTTS	Amye Hollandsworth
CHIP	Mia Cheng
GARGOYLES	Evelyn Chen, Ria Cheng
MADAME DE LA GRANDE BOUCHE	Wenao Wang
CRONIE 1	Isa Punzalan
CRONIE 2	Ilana Loeb
MADAME D'ARQUE	Malwina Osowiecka

*Dance Captain



Offering
Voice Lessons,
Yoga, and
Teaching
Space

Siren Song Enterprises
Music and More

251 Baldwin Ave.
San Mateo Ca
(650) 391-7741
SirenSongEnterprises.com



Heather Anne

ENSEMBLE GROUPS

Italics - Member of eTc Honor Role

“Belle” Soloists

Adelaide Bocchino, Hayden Bunce, Susannah Fox
Maddie Gieseke, Isa Punzalan, Isabella Quiros

Village Ensemble

Hayden Bunce, Susannah Fox, Katharina Gaston
Maddie Gieseke, Garrett Goldberger, Grant Goldberger
Jack Levit, Ilana Loeb, Malwina Osowiecka
Dani Punzalan, Isa Punzalan, Isabella Quiros

Castle Staff

Adelaide Bocchino, Ellyana Bocchino, Sophia Bombach
Evie Judkins, Audrey Keefer, Kate Miller
Emmy Rancatore, Kaitlyn Yuan

Featured Dancers

Evelyn Chen, Ria Cheng, Ashley Hollandsworth,
Grace Hollandsworth, Mia Judkins, Lola Rancatore,
Maya Rayes, Riley Savage,
Lorelai Shub*, *Caleigh Weinshel*

*Dance Captain



Maya,

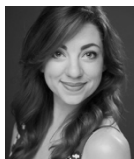
***We're so proud of you, our
favorite Silly Girl!***

Love,

MOM, DAD, SOPHIA & BUDDYgr

STAFF BIOS

Sammi Kenbrandt (She/Her), Director



Sammi Kenbrandt's history with Bay Area eTc dates all the way back to the summer of 2002 when she joined as a camper for her very first musical, as Princess Elizabeth in *The Enchantment of Beauty and the Beast*. And, with the exception of the following summer, she has been back every year since to participate in eTc's productions. Favorite past onstage roles with eTc include: Mrs. Mumford (*Dr. Doolittle*, 2004),

Adelaide (*Guys and Dolls*, 2006), Peter Pan (*Peter Pan*, 2008) and Kala (*Tarzan*, 2015). Sammi became a permanent member of the summer camp staff in 2008 working as a counselor, then later as choreographer, director, and administrative staff. She made her directorial debut with the company in 2016 with their mainstage production of *The Little Mermaid* and has since been back to direct *James and the Giant Peach* (2018), *The Wizard of Oz* (2018), the pandemic-interrupted *Mary Poppins* (2020), and now *Beauty and the Beast* (2024). When Sammi is not working with eTc, she can be seen performing onstage with various theater companies around the Bay Area. Be sure to catch her in Hillbarn Theatre's upcoming production of *Something Rotten!*

Emily Simpson (She/Her), Choreographer



Emily is beyond ecstatic to be choreographing another show with Bay Area eTc! She has directed and choreographed *The Little Mermaid*, *Disney's Descendants*, *Newsies*, and choreographed *Peter Pan* and *Wizard of Oz* with eTc. Other production staff credits include choreographing *Bright Star* at Coastal Rep, *My Fair Lady* and *Gypsy* (assistant choreographer), both at Pacifica Spindrift Players. Her favorite roles on stage include

"Brooke Ashton" (*Noises Off!*), "Little Red Headed Girl/Dance Captain" (*You're a Good Man, Charlie Brown*), "Essie" (*You Can't Take It With You*), "Donna/Dance Captain" (*The Brain from Planet X*), and "Chorus Girl" (*42nd Street*). Emily would like to give a huge thank you to everyone involved in making this show such an amazing experience and success and to her friends and family for humoring the hours upon hours of listening to the *Beauty and the Beast* soundtrack.

Heather Anne Tinling (She/They), Musical Director



Heather Anne (She/They) has been studying voice for 28 years, teaching voice for 14 and performs regularly in the San Francisco Bay Area. She is also the Music Worship Leader at Woodside Road United Methodist Church. She holds two Bachelors degrees: Acting and Classical Voice. She completed her 200 hr RYT certification to bring the benefits of Yoga to her voice students and discovered that her vocal knowledge was needed in the

Yoga Teacher community as well.

Ron Ho (He/Him), Technical Director & Lighting and Sound Design



Ron has worked on many productions throughout the Bay Area, providing Technical Direction, Light and Sound Design services. He also works with local schools and institutions to assist in providing Technical Theatre instruction. Ron has been with eTc for many years. One aspect of the job that he enjoys is to assist in the education of the many parent volunteers in

Technical Theatre. One of his challenges is to incorporate the new technologies with the "Old School" theatre concepts. He enjoys creating a total "Show Control" solution incorporating video, music, lights and sound into a single operations platform.

STAFF BIOS (CONTINUED)

Ria Lodick (She/Her), Stage Manager



Ria first joined Bay Area eTc in 2011 as Grace Farrell in *Annie Warbucks* and since then has appeared onstage in *Honk!* (Ida, 2012), *Narnia* (Mrs. Beaver, 2012), *Oliver!* (Widow Corney, 2013), *Seussical* (Gertrude u/s, 2014), and her favorite role in *Shrek* (Fiona, 2014), behind the scenes as director (*The Wiz* 2015, *Narnia* 2017, *Annie* 2017), and as the resident Mainstage stage manager since 2016, as well as the director and/or vocal director

for eTc's Youth Summer Junior Musical Camps since 2015. Other favorite productions around the Bay include: *Chicago* (Liz) and *Rock of Ages* (Constance) with Stage1, *How to Succeed in Business...* (Hedy), *Pirates of Penzance* (director), and *Godspell* (director) with Pacifica Spindrift Players. Ria has a Master of Education in Instructional Design, a Musical Theatre Vocal Performance Graduate Certificate, and is a NDNU Music Theatre Conservatory graduate but she's most inspired when passing information on to young minds in ways that encourage them to explore their own creativity and passions. When not dressed all in black commanding the backstage, she can be found performing pantomime with the Fremont Players, zenning in an aerial yoga class, or just chilling with her dog Zin VanDel.

Jeanne Hoffman (She/Her), Scenic Designer



As an eTc veteran of too many years, Jeanne humbly presents her interpretation of scenic design for eTc's production of *Disney's Beauty and the Beast*. Jeanne has helped in many ways in every eTc production since joining the company in 2008. Of course her favorites featured her daughter Kelly ... but all have been amazing and rewarding! An amateur

and layman, she apologizes to her mentors who shall remain nameless to protect their identities. She thanks SMCN, TG, and DC for the many tricks of the trade shared with her over the years, and especially DH and BH for their help along this particular journey. Jeanne hopes that you will enjoy the production in spite of her shortcomings and thanks the volunteers who worked so hard to make it look amazing!

Theresa Budig (She/Her), Costume Designer



Ms. Theresa is celebrating her umpteenth plus ump production with eTc. As one of the founding members of eTc Theresa has worn many hats, both literally and figuratively. She has been involved in pretty much all aspects of the company (except working on set construction where they use power tools and X-acto knives, which frighten her). She takes pride in bringing the theatrical experience to the community and bringing children and their

families together through theater. Theresa would like to thank the costume committee members for all their hard work.

THANK YOU TO OUR SUPPORTERS

We would like to thank the following supporters.
Please support those who support eTc!

Kim Harvath, Melodic Remedy Dance Studio
Rudy Chapman, Theater Manager, Bayside Performing Arts Center
Ron Ho Lighting and Sound Design
Carlmont High School Drama
Palo Alto Players
Hillbarn Theater
John Paul Bersabe, Bersabe Films



Talia & Ilana: We are so proud of you and it's great to see you both on stage!

Congrats to the whole cast & crew!

-Carly & Wayne Loeb



❤️ Sophia ❤️

Congratulations on your 3rd show with eTc!! Your hard work and dedication is an inspiration to all of us. We are so incredibly proud of you.

Keep reaching for the ★s!!

Love,
Daddy & Mommy
Sebi & Han Solo

THANK YOU TO OUR CORPORATE AND FAMILY SPONSORS

Bay Area eTc continues to have two different types of sponsorship programs available. Families of current cast members can support the current show through the Family Sponsor Program. Family sponsorships are available at four different pricing levels and include perks such as advance ticket sales, personal or business playbill ads, raffle tickets, additional one liners, a company party family pass, and much more!

Marquis Family Sponsors (\$750-\$1,000)

The Cheng Family
The Goldberger/Wang Family

Center Stage Family Sponsors (\$550-\$750)

Amye Hollandsworth

Spotlight Family Sponsors (\$350-\$450)

The Loeb Family

In addition to our family sponsorship program, eTc offers local businesses the opportunity to support the company through our Corporate Sponsor Program. Corporate sponsorships also are available at four different pricing levels and include perks such as business playbill ads, logo placement on production posters and T-shirts, advance ticket sales, and more.

Email contact@bayareaetc.org or visit www.bayareaetc.org for more information on our sponsorship opportunities, and thank you very much to the families and businesses for your support!

Silver Sponsorship

Simpson, Garrity, Innes & Jacuzzi

Bronze Sponsorship

Orthodontics of San Mateo

Amye Hollandsworth, Rodan and Fields Independent Consultant

INDIVIDUAL & FAMILY GIVING

Your Support Plays a Big Part! Each year when we select scripts to produce on stage, design education programs for classrooms, and partner with community organizations, we do it with one goal in mind: to enrich the lives of the young people and families we serve.

Ticket sales and registration fees cover only a small part of our show and facilities budgets. The remainder comes from our generous donors (above and beyond our family and corporate sponsors), allowing us to preserve the level of excellence you've come to expect from Bay Area eTc. These contributions also help us offer a generous scholarship program and provide subsidized tickets for under-privileged groups. You can choose how you want your donation to be used.

Thank you for all the ways you support the Theater. For buying tickets, engaging in our education programs, and telling friends about us. If you've made a gift, please know how much we value your support. And if you've considered making a gift, we hope you'll join us! Your gift not only provides essential financial resources for our programming, it also provides valuable benefits for you and your family to enjoy.

We hope you will enjoy this show! Afterwards, please patronize our supporters and sponsors. Please be sure to tell them you heard about them from eTc!

In order to continue bringing quality family theater to the Bay Area, eTc needs your help. We are raising funds and accepting donations to obtain theatrical and office equipment. We would love to have our own sound and lighting equipment. We always need the following:

Video Equipment
Special Effects Equipment
Power Tools

Paint Supplies
Lighting Instruments
Building Supplies

Please email contact@bayareaetc.org or visit www.bayareaetc.org if you'd like to donate.

ETC BOARD OF DIRECTORS

The Bay Area Educational Theater Company has an all-volunteer Board of Directors. Thank you to each of these dedicated persons for giving their time and effort to make our programs truly the best we can offer. Your enthusiasm and passion are greatly appreciated, and we could not do it without you!

Scott Urman, President
Dina La Bove, Treasurer
Kim McIntire, Secretary
Caren Cioffi, Director
Jeanne Hoffman, Director
Keith Koch, Director
Robert Mullen*, Director
Theresa Budig, Director

Danielle Brewer, Advisor
Sally Cristgau, Advisor
Patty Grewell, Advisor
Laurie Hilt, Advisor
Amye Hollandsworth, Advisor
Peter Moore, Advisor
Michelle Oberes-Padre, Advisor
Derick Punzalan, Advisor
Mary Anne Payne, Advisor
Kevin Railsback, Advisor

Lori Adams*, Director Emeritus
Jean Amabile*, Director Emeritus
Frank Huybrechts*, Director Emeritus
Lorna Smith*, Director Emeritus
Debbie Meade, Director Emeritus
Kate Bartolomei*, Lifetime Member

* eTc Founders



Krista A. Hirasuna, DDS, MS

Specialists in Orthodontics for Children and Adults

- Caring, knowledgeable staff in a fun, comfortable atmosphere
- Convenient onsite parking
- Flexible scheduling – Saturday appointments available

2720 Edison Street, San Mateo, CA 94403
650.574.4444 OrthodonticsOfSanMateo.com



CONGRATULATIONS

To The Wangberger Family!



Garrett and Grant, you guys are so amazing! Mommy and Daddy are bursting with pride and feel so fortunate to be on stage with you. Sharing this experience as a family is truly special.



Congratulations to the entire cast & crew!
Thank you for everything! 💖

COMMITTEES AND CREWS

There are not enough "Thank You's" to show our appreciation to these wonderful friends and families of the cast, without whom this production simply could not happen. (* denotes amazing alums who have generously given of their time and talents to help this show succeed!)

PRE-SHOW COMMITTEES

Bios

Dalia Rayes, Chair
Eva Cheng, Caren Cioffi, Marzena Osowiecka

Costumes

Theresa Budig, Designer, Kristen Hildebrandt Co-Costumer
Briana Bernal, Kim Breidel, Michelle Chen, Natalie Chen, Lozina Cheng
Catherine Gaston, Katharina Gaston, Miles Grewell, Patty Grewell
Jeanne Hoffman, Dina LaBove, Lily Levit, Carly Loeb, Lauri Pasch
AnnaMarie Quiros, Danielle Shub, Cathy Yaras, Annie Young

Playbill

Scott Urman, Chair
Theresa Budig, Jeanne Hoffman, Amye Hollandsworth, *Sammi Kenbrandt*
Kim McIntire, *Emily Simpson*

Publicity

Amye Hollandsworth, Chair
Derick Punzalan, Website and Social Media
Carly Loeb, AnnaMarie Quiros

Props

John Bunce, Catherine Gaston, Miles Grewell, Patty Grewell
Sammi Kenbrandt, Emily Simpson

Set Construction and Painting

Jeanne Hoffman, Designer
Jen Alfonso-Punzalan, Cat Burkett, Annie Cheng Eva Cheng, Lozina Cheng
Richard Cheng, Wesley Cheng, Cassandra Gaston, Douglas Gaston
John Giesecker, Dan Hildebrandt, Bruce Horn, Dan Judkins
Beth Keefer, Keith Koch, AnnaMarie Quiros
Ryan Rancatore, Marat Shub

Special thanks to our many alum families
who helped bring this production to the stage!
Your talent and support is greatly appreciated!

COMMITTEES AND CREWS (CONTINUED)

IN-THEATER COMMITTEES

Chaperones

Michelle Oberes-Padre, Chair
Cat Bocchino, Kimberly Breidel, Kate Fox
Maureen Smith, AnneMarie Quiros

Company Party

Michelle Oberes-Padre
Maureen Smith

House Duties

Michelle Oberes-Padre, Chair
Kevin Chen, Michelle Chen, Amye Hollandsworth
Jen Alfonso-Punzalan, Dalia Rayes

Ticket Sales and Ticket Booth

Patty Grewell, Chair
Sheila Khan

Stage & Technical Crew

Jeanne Hoffman, Chair
Kimberly Breidel, John Bunce, Keefer Chen, John Giesecker
Dan Hildebrandt, Bruce Horn, Kim McIntire, Keith Koch
Nico Oberes-Padre, Kelly Rancatore, Dalia Rayes

MELODIC REMEDY

////// DANCE STUDIO



767 INDUSTRIAL RD, SAN CARLOS
WWW.MELODICREMEDY.COM
(650) 622-9390

COME DANCE WITH US!

Offering Beginner - Advanced Dance Classes for ages 3 to Adults!

JAZZ - MUSICAL THEATRE - TAP - BALLET - HIP HOP - LYRICAL - CONTEMPORARY - STREET JAZZ - ACROBATICS

CONGRATULATIONS

TO MIA C. AS CHIP,
RIA C. AS ENSEMBLE -
GARGOYLE/WOLF/DANCER,
KAITLYN Y. AS ENSEMBLE - CASTLE STAFF



*Mommy Daddy/ Gugu Gufu are so proud
of you guys! Keep up the great work!*

***Congratulations to the entire cast &
crew of Beauty and the Beast***

★ MESSAGES TO OUR STARS ★

★Mia C★ Chill. You play a good cup. ♥ U sis ♥ Ria
AM&EN UDIT! SIS=BFFE H&K ♥ M&D
Bubby don't be sheepish URA ★! ♥ M&D, M&G & GG
AMBB you rocked the ♪! ♥ M&D, M&G & GG
AM&EN PAW & R PD, WTG ♥ Mama & Dadda
★Kaitlyn★ Wassup, bro? Slay all day! ♥ U cuz ♥ Ria
Cogs-it was a fun TIME sharing every scene w/u♥Ma
Ria, great job hunting down Maurice! 🍌 Wangbergers
Grant, you rocked!! ★ ★, Mom and Dad
Garrett, awesome job!! ★ ★ Mom and Dad
Mia, you are the most adorable Chip! ♥ Wangbergers
TRL we ♥ 2 c u glowing on stage! 😊 M&D
SophieB 🎵So proud of you! ☆
Congrats on your Enchanting performance Lorelai ♥ all of us
Emmy, we love you, you literal beast #slay
♥ Lola, guess howl much we love you? ♥

CONGRATULATIONS TO THE CAST AND CREW OF BEAUTY & THE BEAST!

SIMPSON, GARRITY, INNES & JACUZZI, P.C.

Attorneys At Law

*Attorneys Representing Businesses
In All Labor and Employment Law Matters*

*Paul V. Simpson, Ronald F. Garrity
and Marc L. Jacuzzi*

**Simpson
Garrity
Innes &
Jacuzzi**

- Employment Law Counseling ▪ Employment Litigation
- Prevailing Wage Compliance ▪ Labor Commissioner Matters
- Wage-Hour Class Action Defense ▪ Trust Funds Litigation
- Arbitrations, EEOC and NLRB ▪ Employment Contracts
- Union Disputes ▪ Employee Handbooks
- Trade Secrets/Unfair Competition

With two locations to serve you

601 Gateway Blvd., Suite 950
South San Francisco, CA 94080
(650) 615-4860

2175 N. California Blvd., Suite 710
Walnut Creek, CA 94596
(925) 322-8889

website: <http://www.sgijlaw.com>

★ MESSAGES TO OUR STARS ★

Go ★Wangbergers★! Rock it! ♥ Chengs
Wenao Amazing accomplishment! Can't wait! ♥ Eva
Future★Kaitlyn★shine bright! ♥ Uncle Wes & Aunt Eva
So proud of you Villager Jack! Break a leg!
★Ria★ U R great, U R awesome & U R amazing ♥ Mia
★Kaitlyn★ U R great U R awesome & U R amazing ♥ Mia
Great job ★Ria★! Proud of U! ★ Power! ♥ Mom & Dad
So proud of our ★! Mom, Dad, Ben & the kitties
Sam,Ash,Grace-So happy that U found♪HOME♪on stage
★★★★Kaitlyn, you Slay!★★★★
★CONGRATS★URall amazing♪NO MATTER WHAT!♪♥MrsPotts
Ash-Def♪SOMETHING THERE♪when ur on stage! URa★♥us
Congrats to all cast & crew, especially all the Silly Girls. Maya
♥😊 Great work on crew, Kassandra! 😊♥



It has been TEA-rrific entertaining YOU, Our Guests at

Bay Area eTc's Beauty and the Beast!

Nothing makes you feel *YOUNG* again like singing and dancing on stage!

~~Except maybe using the #1 Anti-aging Premium Skincare Regimen in the U.S.!~~

The REDEFINE Regimen
targets all visible signs of aging 24/7.

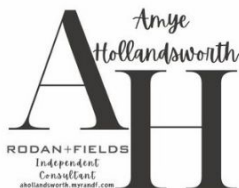


RODAN+FIELDS

— the best hair of your
life starts at *the root*



Mention this ad to get a FREE skin and hair consultation,
FREE samples, and EXTRA \$\$\$ back!



@Amye Loy Hollandsworth
650.740.2946

Remember...
Your *SKIN* is
90%
of your
SELFIE.

R+F

★ MESSAGES TO OUR STARS ★

Thank u mom & dad for doing the show with me! ♥ Grant

Good job Ilana! ♥ u lots!!! - Thing 1 😊

Congrats Hollandsworth family! ★ Wangbergers

Isabella Quiros keep reaching for the ☆! ♥ Dad& Mom

Sophie B WE LOVE U ♥ MOM&DAD

such a joy watching you on stage! 3 eTc shows ★ ★ ★,
and stepping on stage with eTc for the first time! ★ Audrey, we're so proud of
you! ♥ Mom & Dad

★Evelyn★ love that you follow your passion (L) Mom & Dad & N
Maya, we're proud of you, break a leg! Mom, Dad, Sophia & Buddy

♥ ★ Katharina, you are a shining ★ ♥

Gracie-We R so proud of U&ur FEATURED dancing!★♥😊

DP aka ♪GASTON♪ U rock! Great job, Punzalan Framily

Mark you are the strongest Maurice! ★ Wenao

Congrats to IL, our favor8 villager! ♥ M&D

Thank you Sammi, Emily, Heather Anne! ♥ Wangbergers

SophieB Shine like a ☆ Mom&Dad

can't wait to see this performance! Love, Mom & Dad

It's fun running lines with you, Daddy! Grant ♪

ur all ★★ SH, BG, MJ, IP, MS!!! -Talia😊

Lindsay you turn rehearsals into concerts! ♥ Wangbergers

PRINCESSA SOPHIE te quiero mucho♥YAYA&GPA

way to go kid! All our love, Mom & Dad

We love watching you sing and dance and Slay, queen! Another awesome show!

No cap fr fr. LOLZ. Love you!

Congratulations on another show! So proud of you! Love you!

★ Congrats on your 7th Mainstage, Caleigh ★

Daddy you are the best ♥, Garrett & Grant

👍 Lumiere/Talia

Congrats Derick, Dani & Isa! ★ Wangbergers

Hayden - Stirring up drama as the tavern's heart

Isabella Q, you shine on stage! ♥ Mom &Dad

We're so proud of you Susannah!

SOPHIE UR the Best sister EVER ♥ Sebi

Mia ♥ We are so-o proud of you! It has been

Evie ♥, We are so->o proud of you being brave

So proud of you, Kate! ♥ Mom, Dad & Hannah

★Mia C★ 1st time with a mic! Level up! ♥ Mom & Dad

☆☆Great job, Cast & Crew!!!☆☆ Congrats!☆☆



HONOR ROLE



The eTc Honor Role consists of cast or artistic staff members who have participated in at least 5 Mainstage shows. They play an important 'role' in our community and without their experience and enthusiasm eTc would not be what it is today.

Name..... First eTc show

Balcony (5 shows or more)

Emily Simpson (6)..... *Wizard of Oz* Fall 2018
 Bekah Garlikov (7) *James and the Giant Peach* Spring 2018
 Caleigh Weinshel (7)..... *Annie* Fall 2017

Mezzanine (10 shows or more)

Sammi Kenbrandt (11)..... *Seussical* Fall 2004
 Miles Grewell (13)..... *Willy Wonka* Fall 2009

Orchestra (15 shows or more)

Ria Lodick (18)..... *Annie Warbucks* Fall 2011



Congrats to the Cast & Crew of

Disney BEAUTY AND THE BEAST
THE BROADWAY MUSICAL

We found our "Home" with you all,
 "No Matter What"! We can't wait for the next show!

Love, The Hollandsworths
 (Amye, Sammi, Ashley, and Gracie)

LEGACY ROBE

Honoring ensemble members, the backbone of every show, the Legacy Robe tradition dates back more than 50 years on Broadway. It started when an ensemble member in *Gentlemen Prefer Blondes* sent a chorus girl's robe as an opening-night gift to a friend, who attached a show memento and passed the robe to yet another legacy performer for good luck. Today, the ceremony is a formal part of every Broadway musical's premiere.



eTc is excited to continue this tradition with this production of *Beauty and the Beast*. The production staff considers attitude, improvement and dedication in selecting the recipient, who dons the robe and circles around the cast for good luck before curtain. Later, the recipient attaches a memento, and presents the robe to his or her successor.

CONGRATULATIONS TO LOLA RANCATORE

LEGACY ROBE AWARD WINNER FOR BEAUTY AND THE BEAST

Previous Legacy Robe Winners

Alexandra Norton - *Peter Pan* - Spring 2013

Carmella Verducci – *Oliver* - Fall 2013

Maddy Yeh – *Shrek* - Spring 2014

JT Hughes – *Seussical* - Fall 2014

Dagny Klieman - *The Wiz* - Spring 2015

Natalie Kantor – *Tarzan* - Fall 2015

Grace Borgeson - *Little Mermaid* - Spring 2016

James Lawrence - *Beauty and the Beast* - Fall 2016

Kristen O'Connell – *Narnia* – Spring 2017

Nico Oberes-Padre – *Annie* – Fall 2017

Cameron and Parsa Tabrizi – *James & the Giant Peach* – Spring 2018

Eva Sepulveda – *Wizard of Oz* – Fall 2018

Kate Ridgeway – *Peter Pan* – Spring 2019

Keira Nobida - *Newsies* - Fall 2019

Sammi Hollandsworth – *Descendants* – Spring 2023

Susanna Fox – *Little Mermaid* – Fall 2023

HAVE YOU MADE YOUR SUMMER CAMP PLANS? MUSICAL THEATER SUMMER CAMPS

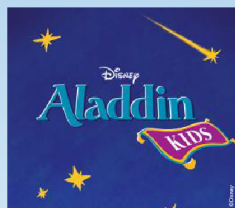
LOVE TO SING, DANCE AND ACT?
JOIN US IN AN EXCITING MUSICAL THEATER
PERFORMANCE EXPERIENCE
FREE EXTENDED CARE 8:30-5:30!!

Registration open! sanmateorec.org



June 24- July 13

Ages
6-9
Hours 9-3



July 15 - Aug 3

FREE EXTENDED CARE 8:30-5:30!!



June 24- July 13

Ages
10-14
Hours 9-4



July 15 - Aug 3

questions? email us bayareaetc@bayareaetc.org